

Where does our compostable stuff go?

GRACE COTTAGE DIVERTS FOOD WASTE LIKE PROS

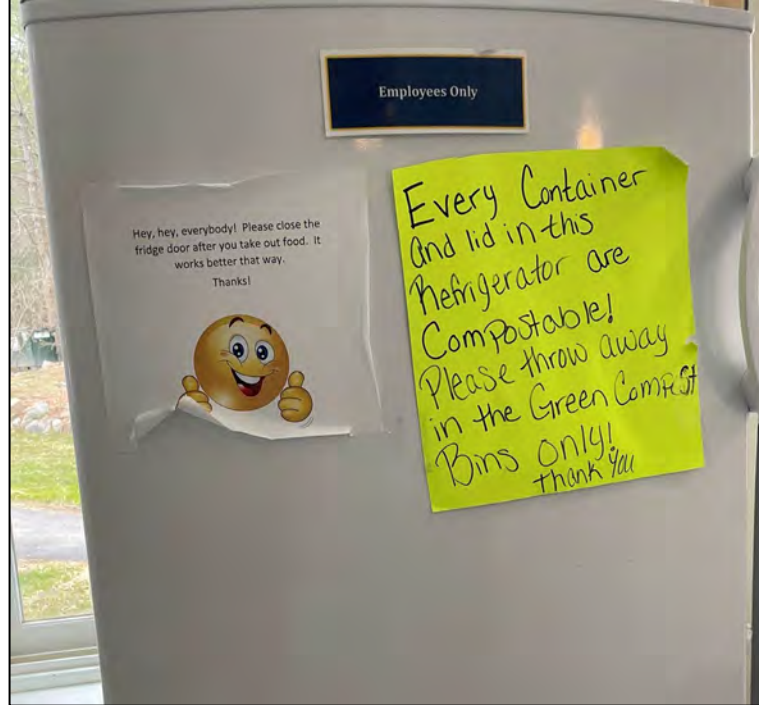
Prepared by WSWMD, April '22



CERTIFIED COMPOSTABLE ITEMS GET TURNED INTO SOIL

Food and the containers at Grace Cottage can be put in the compost bin. Containers have been carefully selected so that they breakdown at WSWMD's compost facility and eventually turn into finished compost to be used by the community.

*If you're unsure, you can make sure your container is compostable by checking the logo/asking someone.



MORE THAN JUST FOOD SCRAPS CAN BE COMPOSTED

These logos tell us that:

- a product can and will breakdown in a composting scenario
- leaches NO toxins and is safe to use in soil
- the item in question has been tested by appropriate parties

If it is not certified, it will most likely not decompose safely

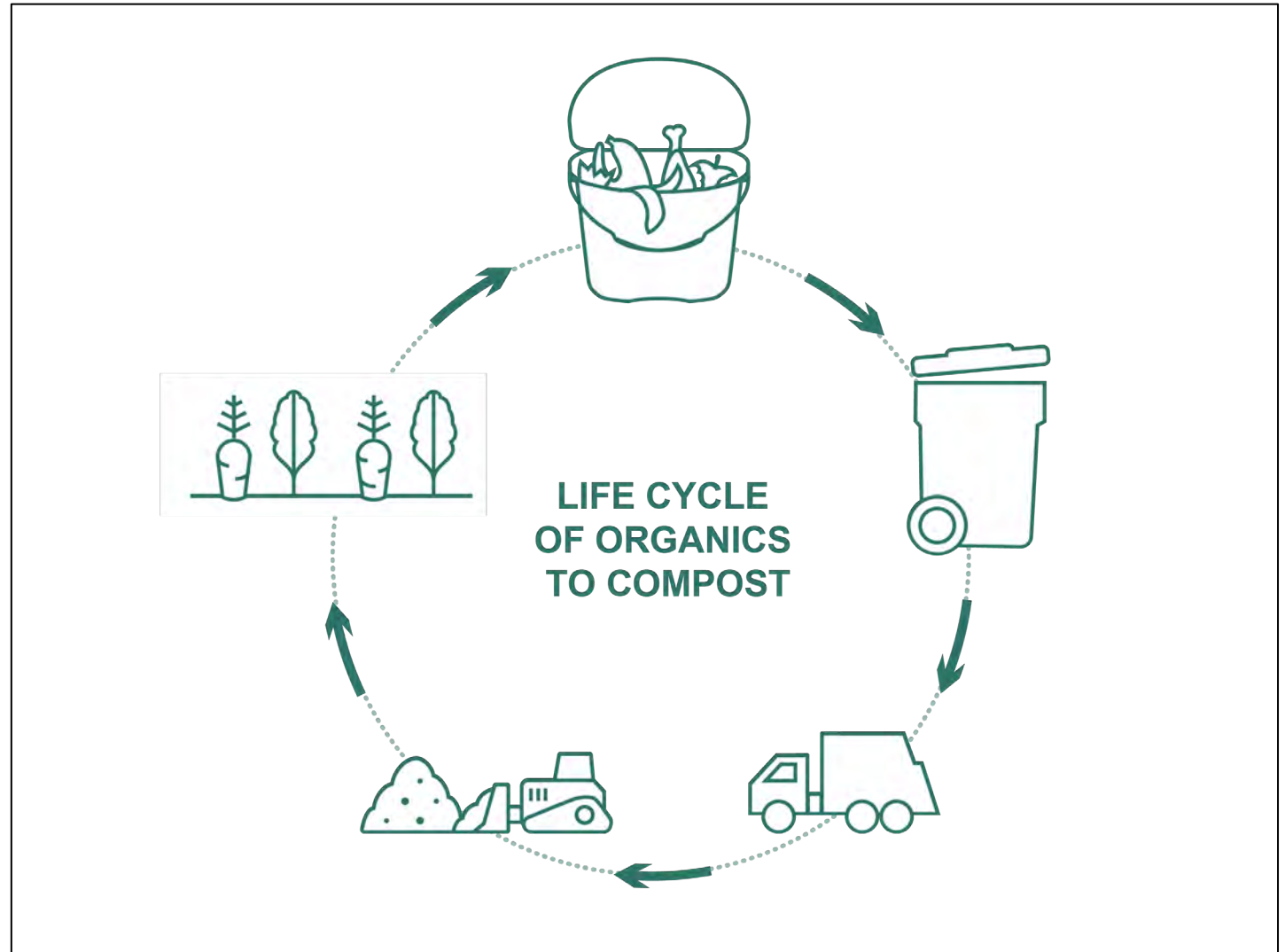


A product **only** needs **one** of the above certifications, but sometimes they have multiple

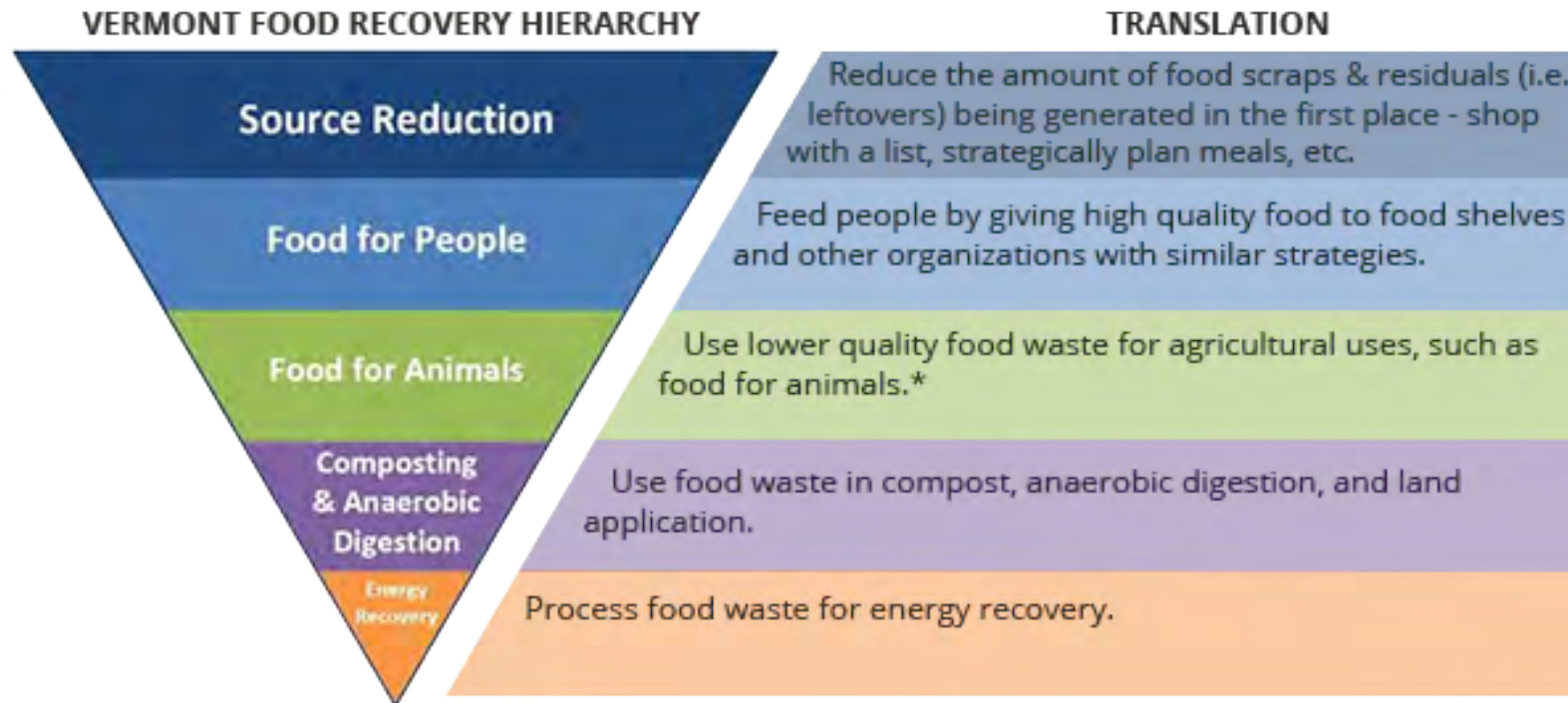
CIRCULAR ECONOMY

Instead of burying waste forever...

We create a life-giving resource!



GRACE COTTAGE IS ON TRACK TO GIVE BACK



*See the Vermont Agency of Agriculture's *Swine Feeding Policy* before feeding scraps to pigs.

CERTIFIED COMPOSTABLE ITEMS

Along with food,
these compostable
items can be turned
into finished compost.



COMPOST WINDROWS

Food scraps, paper, cardboard, and other compostable materials get dropped off and organized into long, tall piles called windrows.

Windrows are one of the oldest formations for creating large amounts of compost. There are records of people using this technique up to a thousand years ago!



THE SCREENER


The screener separates rough, unbroken-down materials from fine, finished compost. This is how we eliminate plastic and other non-compostable materials from our finished product.



ORGANIC WASTE

=

ANYTHING THAT CAN BREAK DOWN AND
COMES FROM EITHER PLANT OR ANIMAL



FINISHED COMPOST

WSWMD's finished compost gets tested annually by a certified laboratory according to state standards to make sure it is mature, safe, and ready to grow healthy food.



COMPOST IS FOR SHARING

Schools, nonprofits, and others benefit from compost donations from WSWMD.

Others buy it at a competitive price.



Bulk Compost & Topsoil Mix



Our compost is made from carefully managed residential and commercial food scraps, leaves, and wood chips from our community.

Available from our distributors:

(Please contact distributor directly
for pricing & delivery details)

Allen Bros Farms, Westminster, VT
802-722-3395, corey@allenbrothersfarms.com

Boyd Family Farm, Wilmington, VT
802-464-5618, boydfarm@sover.net

D & E Tree Company, Inc., Guilford, VT
802-257-5669, doctortree@comcast.net
(Also offers blower truck services)

Maple Hill Nursery, Swanzey, NH
603-357-2555, scotmaplehill@yahoo.com

Renaud Tree Care, Inc., Dummerston, VT
802-257-0567, renaudtreecareinc@gmail.com

30 lb. bags at \$5/bag

BrattleGrow Compost is also available by the bag
at the scale house at our transfer station

1/2-Inch Compost
\$25/cubic yard

BrattleGrow Compost is great for gardens,
raised beds, and for top dressing lawns.

Topsoil Mix
\$35/cubic yard

BrattleGrow topsoil mix is approximately
1/3 compost and 2/3 loam. It is a very easy
to work with, nutrient-rich soil. It's great
for new lawns or for filling and reseeding
damaged areas.

BrattleGrow Compost products are available
wholesale at the WSWMD Facility.
10-cubic-yard minimum. We do not deliver.

Food scraps and compostable items from Grace Cottage get turned into compost locally and is distributed by:

- Allen Bros Farms
- Boyd Family Farm
- D&E Tree Company
- Maple Hill Nursery
- Renaud Tree Care



327 Old Ferry Rd, Brattleboro, VT 05301
(802) 257-0272 office@windhamsolidwaste.org

**Brattle
grow
Compost**
Windham Solid Waste Management District's
All Purpose Compost

“Information is like compost; it does no good unless you spread it around.”

Eliot Coleman



COMPOST
CAN BE
USED IN
THE
GARDEN

COMPOST PROTECTS FROM DROUGHT



Figure 1. Healthy soils with high organic matter will equate to higher water holding capacity.
Credit: Jehangir Bhadha

COMPOST GROWS SUPER HEALTHY FOOD

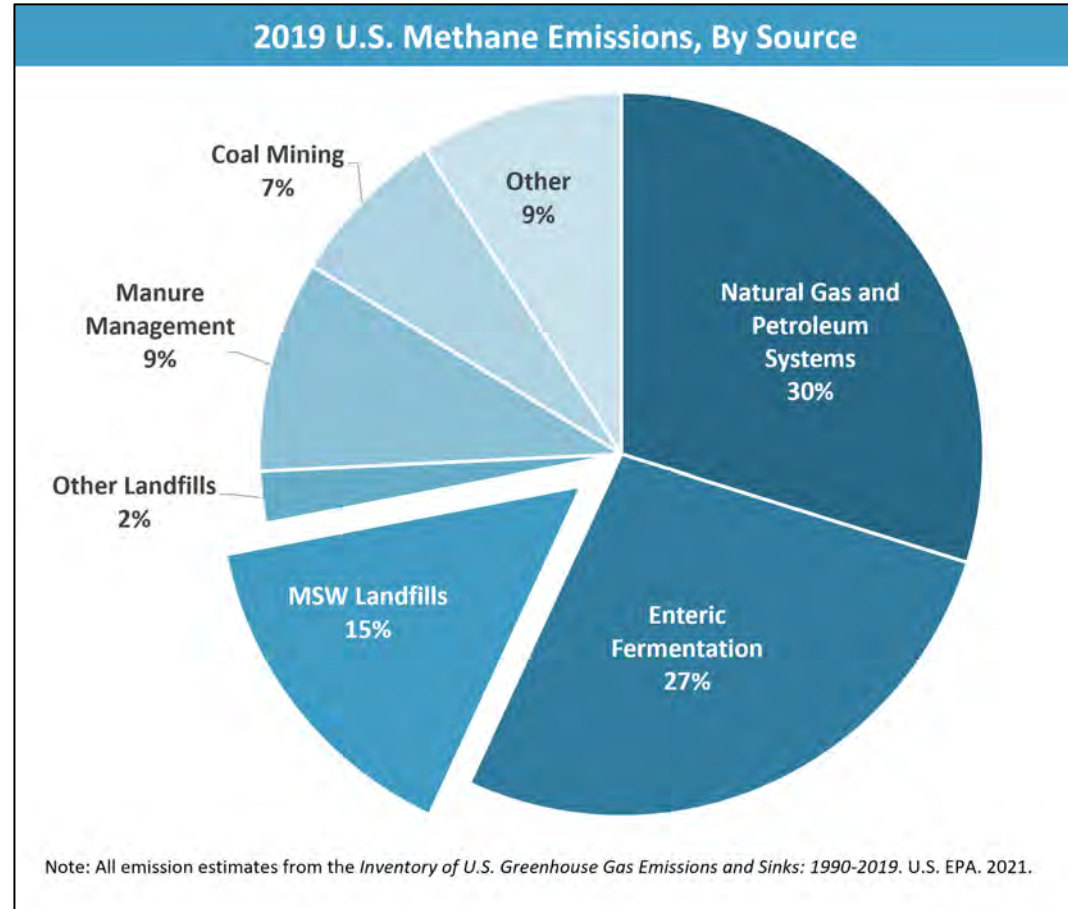


COMPOST CAN BE USED FOR EROSION CONTROL



15% of U.S. Methane Emissions are from Landfills

Methane is produced by rotting organic matter.



What if landfills did not contain organic materials like food waste?

COMPOSTING...

- REDUCES THE DEMAND ON LANDFILLS AND INCINERATORS
- REDUCES POLLUTION FROM THE ABOVE PRACTICES
- IS NUTRIENT RICH AND WILL GROW EXCELLENT VEGETABLES
- REDUCES THE DEMAND ON FOREIGN/SYNTHETIC FERTILIZERS
- IS AN EXCELLENT RESOURCE FOR EROSION CONTROL
- CAN PROVIDE A HEATSOURCE FROM THE DECOMPOSITION PROCESS
- ALLOWS OUR ECONOMY TO FUNCTION LOCALLY
- IS PRACTICED AT GRACE COTTAGE